

R a i s e d
F l o o r
S y s t e m

Raised Floor System

I Introduction

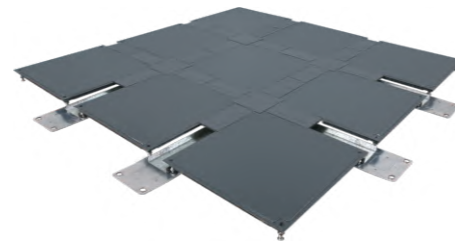
- Raised Floor Panel
- Cement Panel
 - Low Profile Trunking System
 - High Profile Trunking System
 - Corner Lock System
 - Stringer System
- Wood core panel
- Calcium Sulphate Panel
- Perforated Panel
- Floor Box
- Sub Structure
- Accessories

Systems

During the past, raised floor was used only in the data centers and computer rooms. Due to the increased application of advance technology which need proper cable management, raised floor became common as an effective cable management solution in commercial buildings, schools, labs, universities, corporate offices etc. By identifying various applications, AVAYO manufacturing raised floor system using cement, calcium sulphate and wood as the cores and panels are made with bare finish, ceramic finish, carpet or antistatic finishes with high pressure lamination or with vinyl.

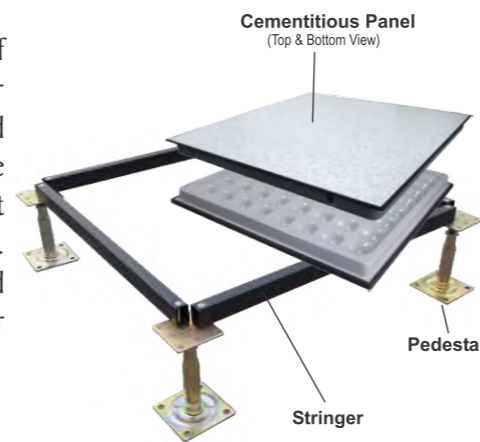
Trunking System

AVAYO Trunking System, made of cement core steel panels, enables easy routing through the cable tanks around the panels. The data cables and power cables can be routed in such a way to reduce electro magnetic interfaces. This is recommended as an ideal solution for commercial building where there is low roof height. The system is available in low floor level and high floor level.



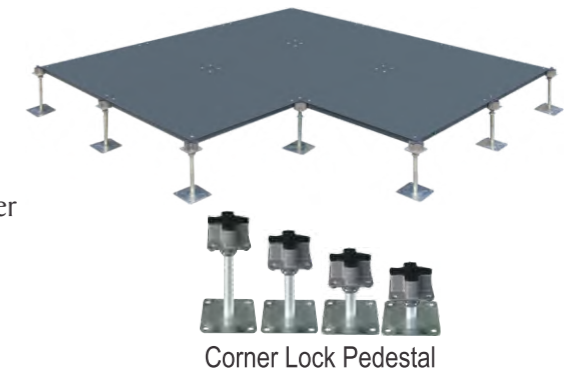
Stringer System

Though stringer system is used for most of the raised floor applications, AVAYO stringer system refers for cement core steel panels used with pedestal and stringer substructure. As in the case of Trunking system, panels made of cement core totally encased with in the steel welded shell. The system is available either with electro-deposited epoxy paint, ceramic finish or with antistatic HPL or Vinyl top finish



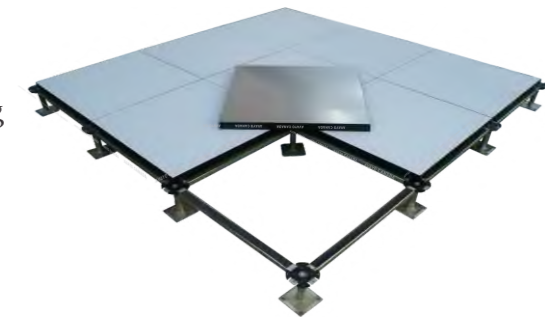
Corner Lock System

In this system, cement core steel panels are fixed to a cross head pedestals with out the support of stringers. The panels are directly fixed to the slots of cross head pedestal with the screws. The pedestal head is fixed with a shock proof cushion. The panels can be either epoxy paint finish or antistatic HPL or Vinyl finish.



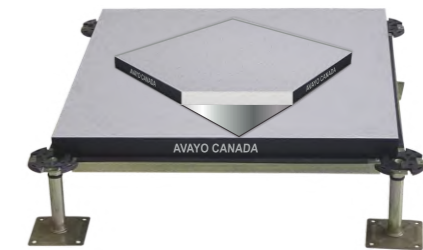
Wood Core System

In wood core system, high quality chip board uses as the core material. Normally the back up is with galvanized steel, some cases Aluminum foil also use to cover the chip core. The sides of the panels cover with PVC edging and top finish can be galvanized steel, Aluminum foil, antistatic HPL or Vinyl finish. Both stringer and stinger less installation is possible in wood core system depends up on the site conditions and project requirements.



Calcium Sulphate System

Heavy duty, highly fire retardant and moisture free calcium sulphate panels are used in most data centre applications. The heavy duty calcium sulphate core with galvanized steel back up and anti static HPL or Vinyl top finish or fully steel encapsulated panels are available in this system. The sides of the panels are protected with PVC edging.



Air Flow Panels

Fully steel or aluminum constructed air flow panels or perforated panels are designed to carry heavy load applications. The rate of perforation on the panels is varying according to the air flow level. The top finish will be antistatic HPL or Vinyl.

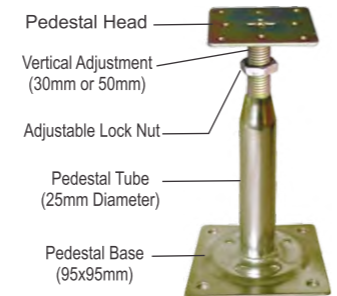


Sub-structure

The sub-structure comprises adjustable pedestals and stringers in galvanized steel for nominal height required and schedule complete with gaskets for all length of stringers except for the case of powder coated type.

Pedestal

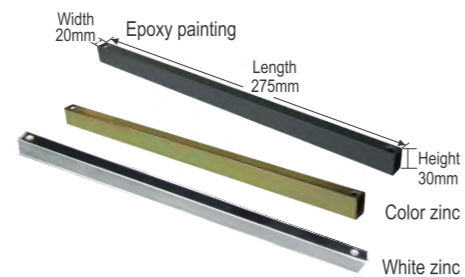
The galvanized steel pedestal assembly consists of a base plate, pedestal tube, head plate with threaded rod and adjustment nut. The base plate welded to the pedestal tube which is designed to engage the head plate with threaded rod. Normally, the vertical adjustment is allowed for 30mm but in some cases the vertical adjustment can be possible up to 100mm. Pedestal height varies as per the site requirement from 100 mm till 1500 mm.



Galvanized Steel Pedestal

Stringers

Made of tube in galvanized steel or powder coated steel, individually and rigidly fasten to the pedestal with screw to support each tile edges. The slotted holes in the stringers allow the mechanical fixing to the head through a self-threading cross-head bolt.



Stringers

Accessories

For the proper performance of the system, the accessories like Ramp, Steps, Fascia Plate, Perimeter support, Grommet, Earth connections, Brazing, Panel Lifter, Floor Boxes etc need to be considered as per the site requirement.

Quality Assurance

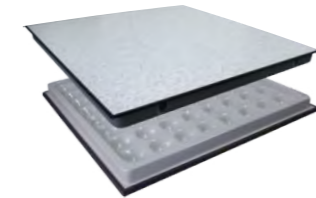
AVAYO ensure the quality of its Raised Floor System at all level of manufacturing, storing, shipping and installation. The manufacturing process strictly adhered to ISO standard and the panels are tested randomly for quality control. In addition to our own testing procedure, AVAYO systems are certified with third party independent testing authority.

Panels

AVAYO Raised Floor Systems are made of four types of panels as per the requirement. They are as follows..

Cement Panels:

AVAYO Cement Panels are fabricated with a top steel sheet welded to a formed steel bottom pan filled internally with a light weight cementitious material which is totally encased within the steel welded shell. The steel shell is protected from corrosion by applying epoxy paint. The panel sizes are either 600x600 mm or 500x500mm size and are available in bare finish or factory finish options like antistatic High Pressure Lamination or Vinyl finish.

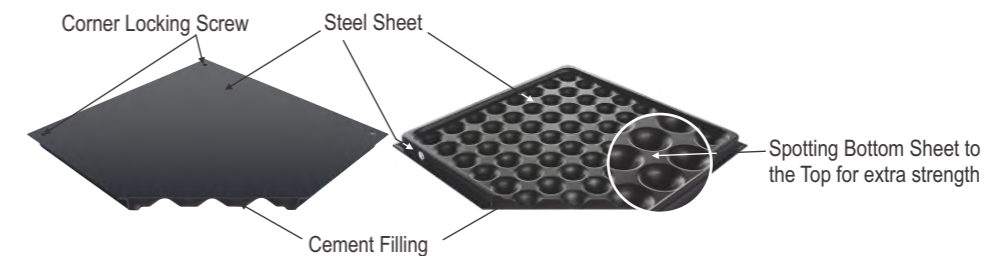


Three different systems are available with Cement Panels which are:

1. Built-in-Trunking System
2. Corner Lock System
3. Stringer System

Panel Specification:

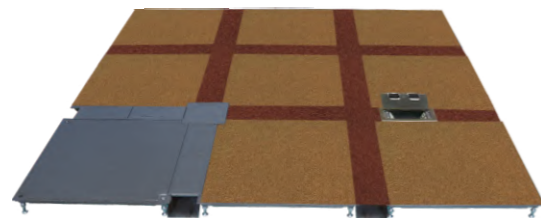
The top of the panel is a plane surface and the press formed structural cell domes in the Bottom welded to the top plate. This design ensures proper distribution of load towards all sides of the panel.



Panel Type	: Cement Panel
Size	: 600x600mm or 500x500mm
Construction	: Welded Steel
Core Material	: Light Weight Cement
Top Finish	: Bare finish or Antistatic HPL or Vinyl
Panel Thickness	: 32-35mm
Edge Protection	: PVC edging for antistatic finish (optional)
Fire Rating	: Class 0

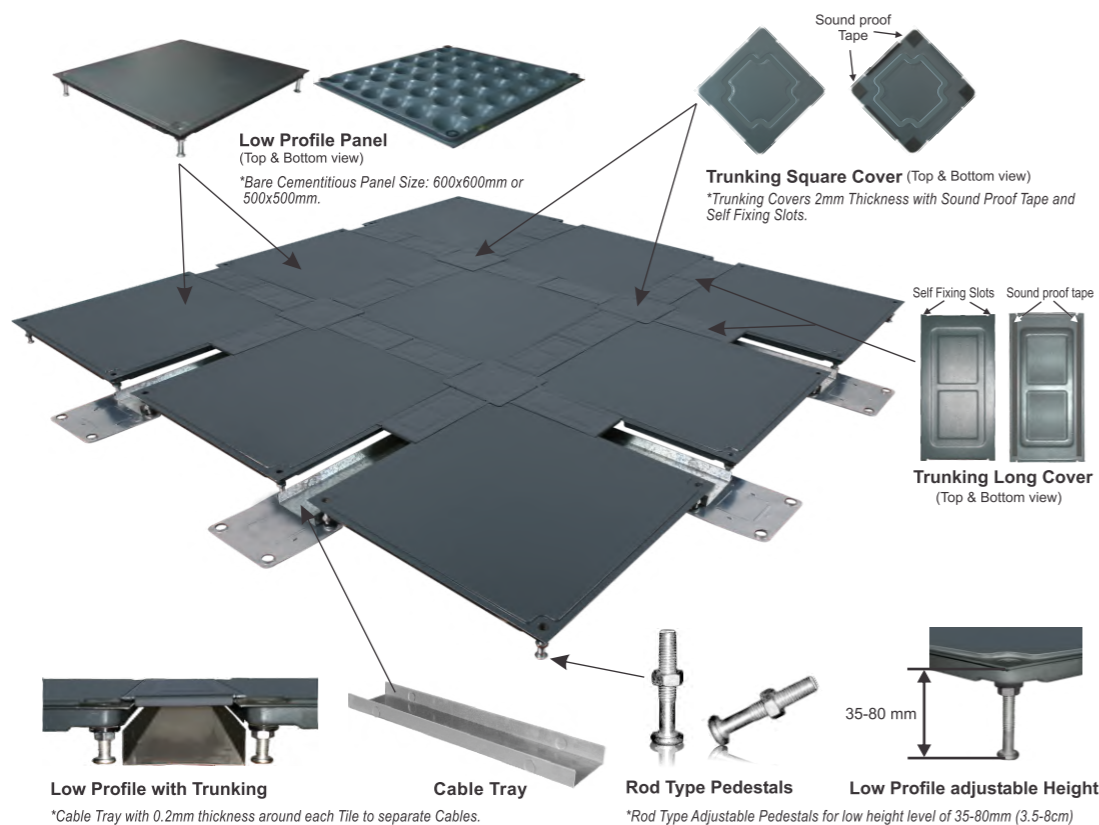
Built – in-Trunking System

Raised Floor with Trunking system made of cement tiles with cable tanks surrounded each tiles or alternative tiles facilitating very efficient cable management solution for offices, banks computer labs, commercial towers etc. Low profile and high profile systems are available in built-in Trunking System.



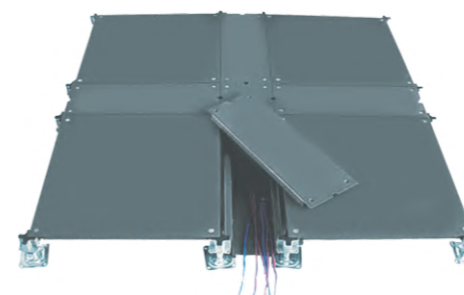
Low Profile Built – in-Trunking System

In low profile trunking system, the height of the total system can be achieved in a range of 35 mm to 80 mm. This is an ideal solution where the roof height is low or the allotted floor provision less than 100 mm. Each tile is surrounded by cable tanks and the cable termination is possible through the specially designed floor boxes. The rod type pedestals glued to the floor and the cable tanks covers fix in the slots, installation makes very easy for this system. The tiles can be available either in 600x600mm size or in 500x500mm size and are ready to accept any top finish like carpet or parquet. Floor box installation is very easy in this system as it can be installed by removing any of the top cover of cable tank.



High Profile Built – in-Trunking System

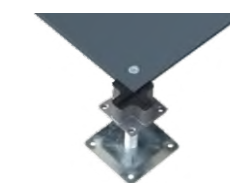
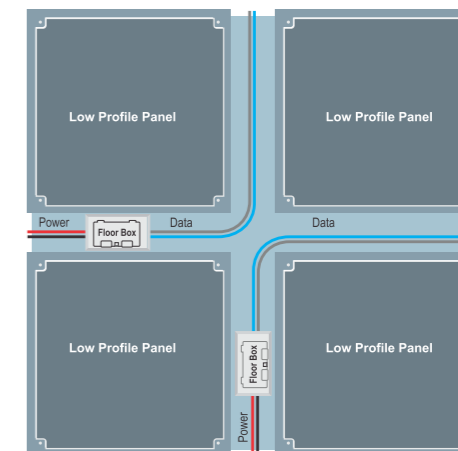
Where ever the height need to be above 100mm, high profile trunking system suggested. In this system, 500x500mm cement tiles fixed on corner lock pedestals with cable tanks surrounded. The design of cable tanks can be either next to each tile or after alternative tiles. The top cover of cable tanks fixed with screws. The maximum height of this system can be 200 mm.



Trunking System For High Floor Level



Pedestals- Different Hight



Corner Lock Pedestal

Optional Floor Box Specification

- ▶ Heavy Duty Floor Box with Chrome Finish
- ▶ 2 Power Socket
- ▶ Provision for 2 Data, 2 Voice / Telephone
- ▶ Two Sides Cable Entry
- ▶ Size: 250mm length x 125mm width x 50mm Height

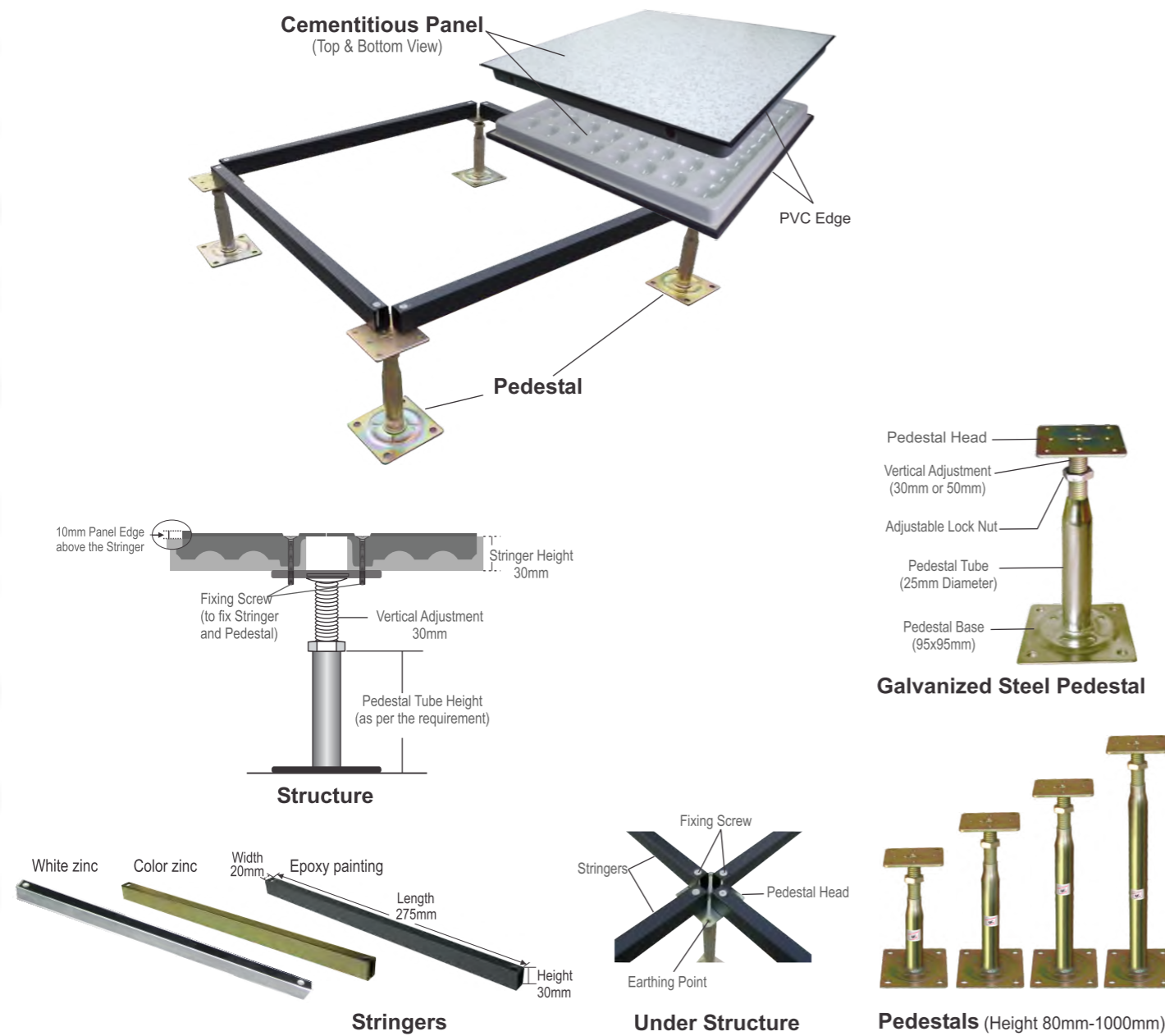
Ordering Information

Part No.	Type	Panel Size (mm)	Concentrated Load	Uniform Load	Ultimate Load	Accessories
AVR-BC 6035-BT	Bare Finish	600 x 600 x35	3.5 KN	16KN	11.5 KN	Complete System (Height 35-80mm)
AVR-BC 5035-BT	Bare Finish	500 x 500 x35	3.5 KN	16 KN	11.5 KN	
AVR-CL 5035-BT	Bare Finish	500 x 500 x35	3.5 KN	16 KN	11.5 KN	Complete System (Height 80-200mm)

Note: For Heavy Duty Flooring Please Contact Us Directly.

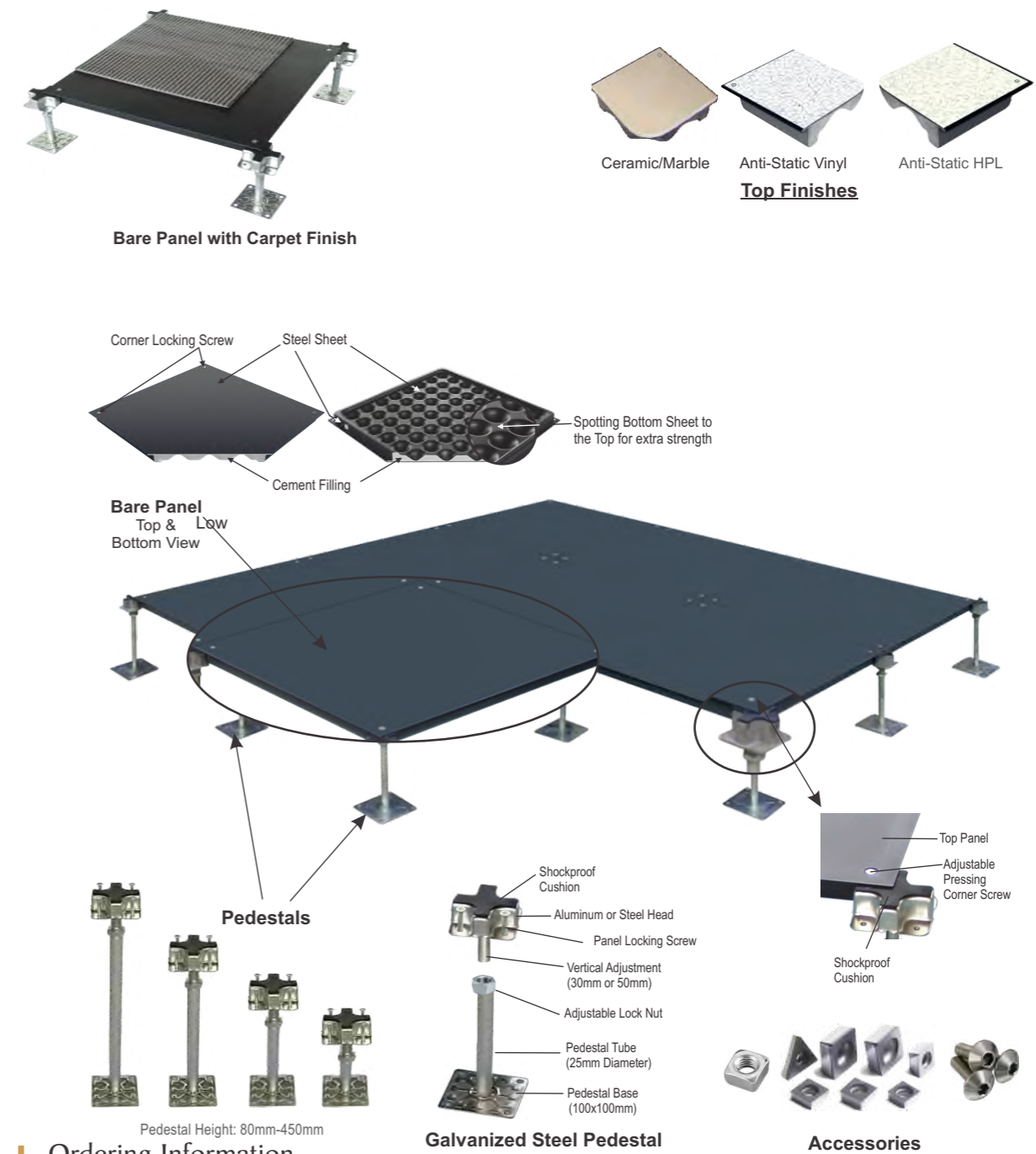
Stringer system

In stringer system, cement tiles are laid on a stringer based pedestal system. Adjustable pedestals in pressed and galvanized steel with an adjustment field from 4 cm to 5 cm. The pedestals are set in link with distance of 600x600 mm or 500x500mm. The stringers with an antistatic self adhesive PVC gasket for the air sealing and sound proofing fixed on the pedestals.



Corner lock system

In this system, panel edges fixed to pedestal head with four screw bolts which passes through matched holes in panel edge and pedestal heads. Tiles can be either 600x600 mm or 500x500 mm and maximum recommended height is 450 mm.



Part No.	Type	Panel Size (mm)	Concentrated Load	Uniform Load	Ultimate Load	Accessories
AVR-BC 6035	Bare Finish	600 x 600 x35	3.5 KN	16KN	11.5 KN	Pedestals & Stingers
AVR-CP 6035-V	PVC Finish	600 x 600 x35	3.5 KN	16 KN	11.5 KN	
AVR-CP 6035-HPL	HPL Finish	600 x 600 x35	3.5 KN	5.5 KN	11.5 KN	
AVR-HBC 6035	Bare Finish	600 x 600 x35	5.5 KN	33 KN	16.5 KN	
AVR-HCP 6035-HPL	HPL Finish	600 x 600 x35	5.5 KN	33 KN	16.5 KN	
AVR-HCP-6035-V	PVC Finish	600 x 600 x35	5.5 KN	33 KN	16.5 KN	

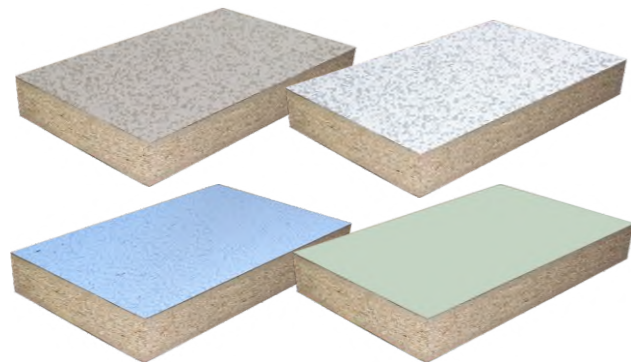
Ordering Information

Part No.	Type	Panel Size (mm)	Concentrated Load	Uniform Load	Ultimate Load	Accessories
AVR-BC 6035	Bare Finish	600 x 600	3.5 KN	16KN	11 KN	Pedestals
AVR-CP 5035	Bare Finish	500 x 500	3.5 KN	16 KN	11 KN	Pedestals
AVR-HCL 6035	Bare Finish	600 x 600	4.5 KN	23 KN	13.5 KN	Pedestals
AVR-CL 5035-V	Vinyl Finish	600 x 600	5.5 KN	33 KN	11 KN	Pedestals
AVR-CL 5035-HPL	HPL Finish	600 x 600	5.5 KN	33 KN	13.5 KN	Pedestals

Wood Core Panel

Made of high density chip board, AVAYO wood core panels offer a reliable and stable flooring system. The bottom of the 600x600mm particle board glued to galvanized steel or covered with aluminum foil and top finish can be either aluminum foil or antistatic finishes like vinyl or HPL. The edge of the panel protected with conductive PVC coating to prevent panels from moisture and damage. Due to its low weight characteristics and easiness in installation, it is suggested as an ideal solution for large installations.

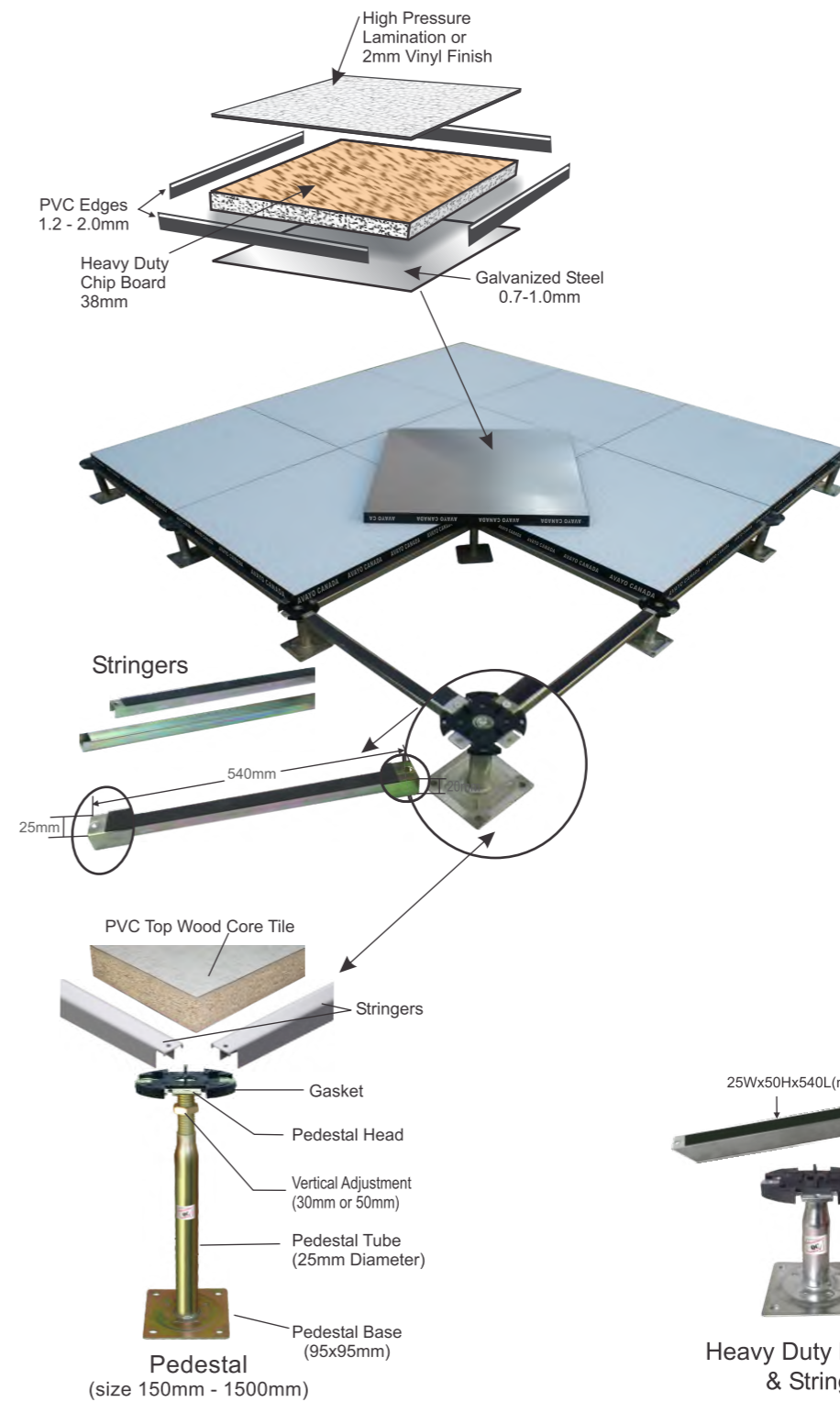
- Panel Type : Wood Core Panel
- Size : 600 x 600 mm
- Construction : Chip core glued to bottom steel sheet or aluminum foil
- Core Material : High density particle board
- Top Finish : Bare finish, Antistatic HPL, Vinyl and Steel encapsulate
- Panel Thickness : 38-40 mm
- Edge Protection : PVC edging
- Fire Rating : Class I



PVC Top Wood Core Tile in different Shades



HPL Finish Tile (600 x 600 x 40mm)



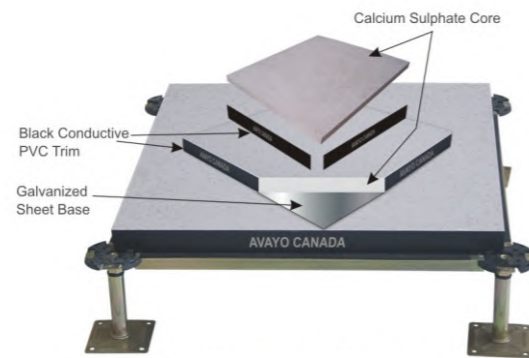
Part No.	Type	Panel Size (mm)	Concentrated Load	Uniform Load	Ultimate Load	Accessories
AVR-WC HPL	HPLFinish	600 x 600 x40	3.5 KN	16KN	11.5 KN	Pedestals & Stingers
AVR-WC-V	Vinyl Finish	500 x 500 x 40	3.5 KN	28 KN	15 KN	
AVR- HWC- HPL	Heavy Duty HPL	600 x 600 x 40	5 KN	28 KN	15 KN	
AVR-HWC-V	Heavy Duty PVC	600 x 600 x 40	5 KN	28 KN	15 KN	
AVR-HWC -E	Steel Encapsulated	600 x 600 x 31	5.5 KN	33 KN	16.5 KN	

RAISED FLOOR

RAISED FLOOR

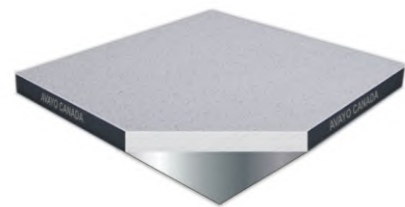
Calcium Sulphate Panels

These panels are made with heavy duty calcium sulphate core glued to galvanized steel bottom and antistatic finish at the top. The bottom steel varies from 0.6 mm to 1.0mm as per loading capacity and the edge of the panel protected with conductive PVC coating to prevent panels from moisture and damage. These panels are highly recommended for data centre application due to its moisture free, sound proof and emission free properties.

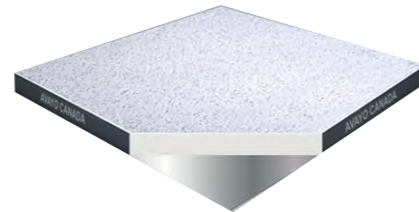


Cross Section Cut-off Panel

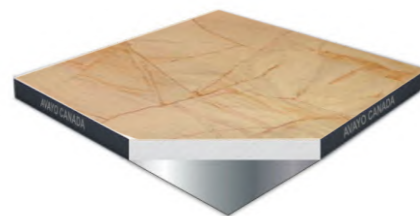
- Panel Type : Calcium Sulphate panel
- Size : 600x600mm
- Construction : Calcium sulphate core glued to bottom steel.
- Core Material : Heavy Duty Calcium Sulphate
- Top Finish : Antistatic HPL or Vinyl
- Panel Thickness : 32-34mm
- Edge Protection : PVC Edging
- Fire Rating : Class 0



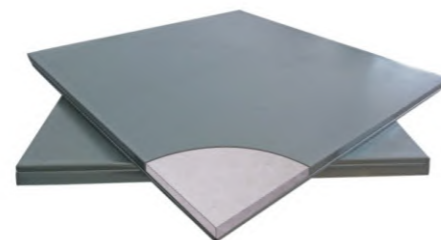
HPL Finish



Vinyl Finish



Marble/Ceramic Finish



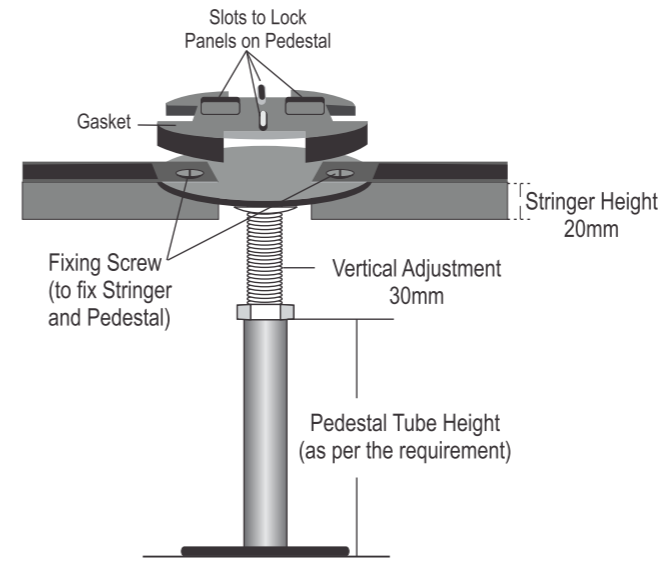
Encapsulated Steel

Characteristics

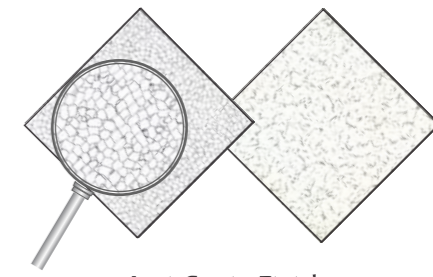
Prevent static validly, Fire Proof, Dust Proof, Electromagnetic Shielding, Low wearability, Strong Pressurization.

Application

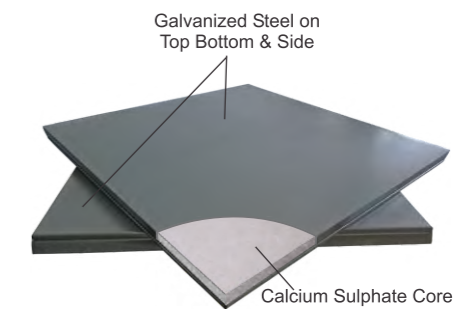
Communication Rooms, Satellite Rooms, Research Centers, Main Control Rooms, Micro Electronics Workshop .



Structure



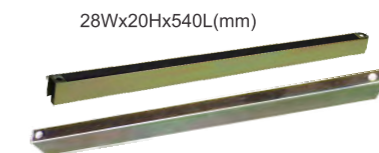
Anti-Static Finish (HPL or Vinyl)



Encapsulated Panel



Pedestal (size 150mm - 1000mm)



Stringers

Ordering Information

Part No.	Type	Panel Size (mm)	Concentrated Load	Uniform Load	Ultimate Load	Accessories
AVR-CS 6032-V	Vinyl Finish	600 x 600	5.5 KN	33 KN	16.5 KN	Pedestals & Stingers
AVR-CS 6032-HPL	HPL Finish	600 x 600	5.5 KN	33KN	16.5 KN	
AVR- CS 6032-E	Steel Encapsulated	600 x 600	5.5 KN	33 KN	16.5 KN	

RAISED FLOOR

RAISED FLOOR

Perforated Panels

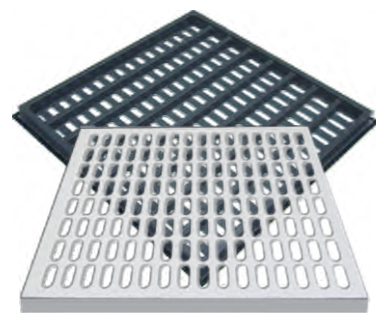
Perforated panels are made of complete steel panels or aluminium panels in 600x600mm size to achieve an airflow level of 20,30 and 40 %. Steel square tube or aluminium tubes are welded on the bottom of a steel or aluminium sheet and makes perforations as required .Top finish can be antistatic HPL or Vinyl and edge are fixed with conductive trim.



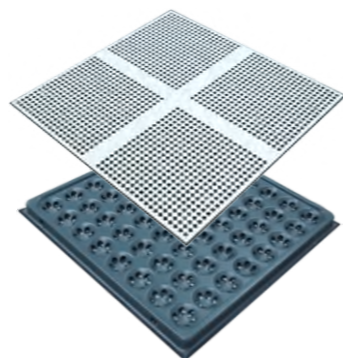
- Panel Type : Air Flow Panel
- Size : 600x600mm
- Construction : Square steel tubes welded to the top sheet
Or aluminum tubes welded to top sheet
- Core material : Steel or aluminum
- Air Flow Level : 20,30 & 40%
- Top Finish : Antistatic HPL or Vinyl
- Panel Thickness : 32,35 & 40mm
- Edge Protection : PVC Edging
- Fire Rating : Class 0
- Air Flow adjustment : Flow Control Damper (optional)



Air Flow Controller



Air Flow Tile HPL/Vinyl (40%)
Top & Bottom View



Air Flow Tile HPL/Vinyl (20%)
Top & Bottom View

Part No.	Type	Panel Size (mm)	Concentrated Load	Uniform Load	Ultimate Load	Accessories
AVR-PT40-HPL	40% Airflow HPL	600 x 600	3.5 KN	16 KN	11.5 KN	Pedestals & Stingers
AVR-PT20-HPL	20% Airflow HPL	600 x 600	3.5 KN	16 KN	11.5 KN	
AVR-PT40-V	40% Airflow PVC	600 x 600	3.5 KN	16 KN	11.5 KN	
AVR-PT20-V	20% Airflow PVC	600 x 600	3.5 KN	16 KN	11.5 KN	

Sub Structure

Pedestal

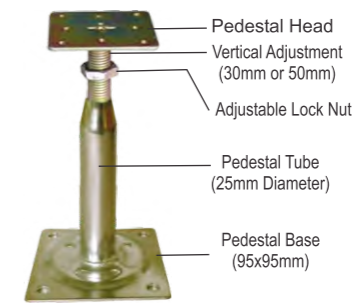
Adjustable pedestals in pressed and galvanized steel with an adjustment field from 3 cm to 5 cm normally and for special cases it can be up to 10cm vertical adjustment. Rectangular base of pedestal with min. size 95mm x 95mm / 3.5mm thick with 4 strengthening ribs and 4 holes to permit mechanical fixing if required. Head of 100 mm diameter 3 / 3.5mm thick cold pressed and cut shaped with 8 radial branches which constitute the support for the stringers. The profile of the branches is appropriately shaped to permit Snap-On connection and lateral locking of the end of the stringers which from the octagonal grid(For cementitious panels, the head designed in square shape). Each branch has a hole to permit the screw fixing to the stringers to the head if required. The other 4 branches are available for supporting diagonal stringers where these may be required for particularly onerous loading requirements. The Bottom center section of the head is expanded into a threaded rod section for vertical adjustment which engages with the 1.5 check nut in order to prevent the latter from rotating. The tube section of 25mm diameter, 2mm thick, the length of which depends on the floor height required, continuously welded to the base of pedestals. Conductive rigid plastic head gasket to dampen noise and vibrations with 4 legs on the top provides lateral location of the panels.

The pedestals are set in link with distance of 600x600 mm for the fixing of pedestals. Galvanized steel pedestal either glued to the sub floor with adhesive or mechanical fixing of with pedestal base using 2mm steel screws.

- Pedestal material : Galvanized Steel
- Head of the Pedestal : Square top plate designed to fix stringers into the place(Cementitious)
Round top plate for Wood & Calcium Sulphate
- Base Construction : 95mm x 95mm x 2.5mm
or 100mm x 100mm x 3.0mm (Heavy Duty)
- Pedestal tube : 26mm Diameter 1.5 mm / 2.0 mm thick
continuously welded to the base
- Construction Height : 100 mm to 1500 mm
(for height above 400mm heavy duty recommended)
- Vertical Adjustment : 30mm / 50mm/ 100mm with twin lock nut system



Pedestal
Wood Core & Calcium Sulphate



Pedestal
Cementitious Stringer System

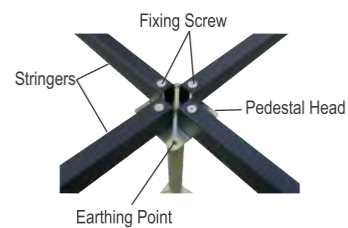


Pedestal
Corner Lock System

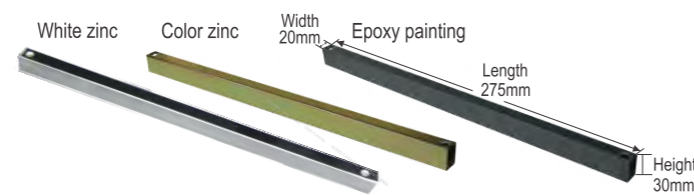
Stringers

Made of tubes in galvanized steel with square section profile 23x32x1.5 mm, length 530 mm. The slotted holes in the stringers allows the mechanical fixing to the head through a self-threading cross-head bolt. The stringers are with an antistatic self adhesive PVC gasket for the air sealing and sound proofing. Stringers made of tubes in powder coated steel with square section profile 20x32x1.5mm, length 565 mm uses in flat head pedestals.

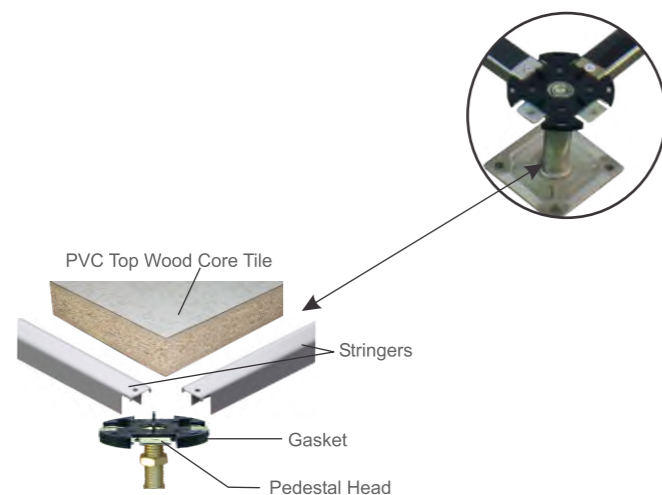
- Stringer Material : Galvanized Steel / Powder Coated
- Size : 23mm x32 mm x 530mm (Wood & Calcium Sulphate)
20 mm x 32mm x 565 mm(Cementitious)
- Steel Thickness : 1.2mm / 2.0mm Steel
- Extra Features : Antistatic self Adhesive gasket for sound proof



Assemble For Cementitious System



Stringers For Cementitious System



Assemble for wood/ calcium system

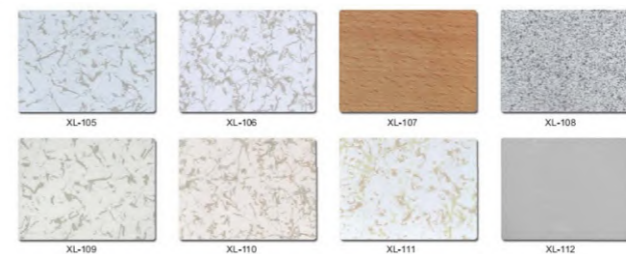


Heavy Duty Pedestal & Stringer

Antistatic finish

High Pressure Lamination

HPL is considered to be one of the most durable decorative surface material and is available with special performance properties including chemical, fire and wear resistance. HPL is produced by saturating multiple layers of Kraft paper with phenolicresin. A layer of printed decor paper is placed on top of the Kraft paper before pressing. The result sandwich is fused together under heat and pressure (more than 1,000 PSI). Because phenolic and melamine resins are thermoset plastics, the curing process transforms the resin into plastic by a cross inking process that converts the paper sheets into a single, rigid laminated sheet. Thermosetting creates strong, irreversible bonds that contribute to HPL 's durability.



Test Properties

- Color pattern & Surface Finish : No significant difference between the corresponding color reference sample and master
- Surface Defects : No Spot , dirt and similar surface defects
- Edge Defects : No Visual defects can be present on all four edge of Laminate
- Broken Corners : No Broken Corner
- Sanding Defects : Slighter Chatter marks allowed
- Resistance to Surface Wear : AC3, Greater than or equal to 2000 cycles
- Thickness : +_ 0.10 mm
- Flatness : Less than mm 60mm
- Resistance to Scratching : Greater than or equal to 3.0 N
- Resistance to Steam : Rating 4. Slight change of gloss/color only visible at certain viewing angles
- Resistance to dry heat : Rating 4 Slight change of gloss/color visible at certain viewing angles.
- Impact Resistance : Greater than or equal to 20 N
- Resistance to Cigarette Burning : Rating 4. Slight change of gloss/color only visible at certain viewing angles
- Resistance to staining : Min rating for group 1 & 2 : Class 5 (No visible change)
Min rating for group 3: Class 4
Slight change of gloss/color only visible at certain viewing angles.

Vinyl Finish

Vinyl finish is favored over other kinds in high-traffic areas because of its durability, and ease of maintenance. Vinyl has high resilience to abrasion and impact damage and can be repeatedly refinished with chemical strippers and mechanical buffing equipment.

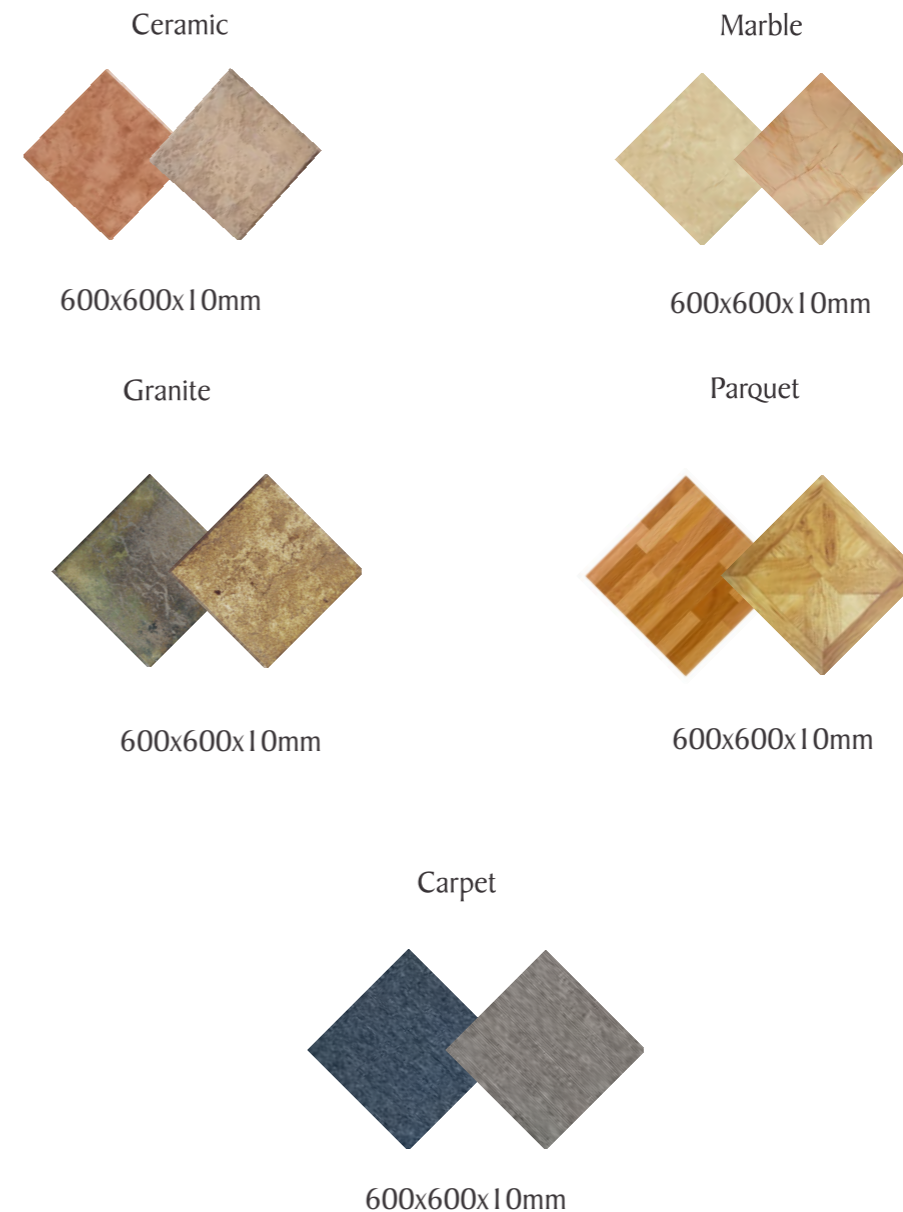


Properties

Surface Protection	:	Polyurethane PU
Usability Class	:	34/43
EC - Certificate of conformity	:	1488-CPD-0017/W
Reaction to fire	:	Bfl-S1
Hygiene attest	:	Pass
Electrical properties	:	Astatic
Electrostatic voltage	:	<= 2 Kv
Slip resistance	:	Class DS
Dynamic coefficient of friction (along/cross)	:	0,39/0,43
Total Thickness	:	2,0 mm
Thickness of wear layer	:	2,0 mm
Wear resistance	:	Group M
Residual indentation	:	0,03 mm
Exposure to heat	:	<=0,4 %
Curling after exposure to heat	:	<=8 mm
Light resistance	:	7
Flexibility	:	Good
Chemical resistance	:	Good
Resistance to micro organisms	:	Yes
Resistance to impact of wheeled hair	:	Good
Possibility to install in rooms with floor heating	:	Yes

Other Finishes

AVAYO offers top finishes like Ceramic, Marble, Granite, Parquet & Carpet as finishes for its raised floor system. These finishes can be provided as per samples or specification and based on the availability of the same. Most of these finishes are factory fixed to avoid any over lapping over the edges of the panel. Finishes like Carpet and Parquet need to be applied at site.



Accessories

Floor Box



AVAYO floor boxes for Raised Floor System with various options of data, voice and audio – video out let provisions allows complete distribution of telecommunication and data communication requirements along with power out lets from one point. Some of these floor boxes allow direct snap in of AVAYO key stone jacks only and some allows provisions for any decorative wall plate to fix inside the floor box. The top plate of the floor box with 3.5 mm thick, stainless steel finish or zinc plated with easy pull up cable out protected against any risk of damage of cables. The steel bottom box fixed to the top plate with screws having cable entry knock outs on all sides. Most of the floor boxes allow 45 degree angled provisions on both sides. Horizontal installation allow in the bigger size floor box which can accommodate up to 12 modules in one box.

Features

- Quick and easy installation or removal.
- Low profile beveled flange to protect from bumping
- Easy pull out cable out with sponge protection
- Heavy duty scratch proof
- Anti static powder coated
- Compatible for low floor level
- Cable entry knocks outs on all sides

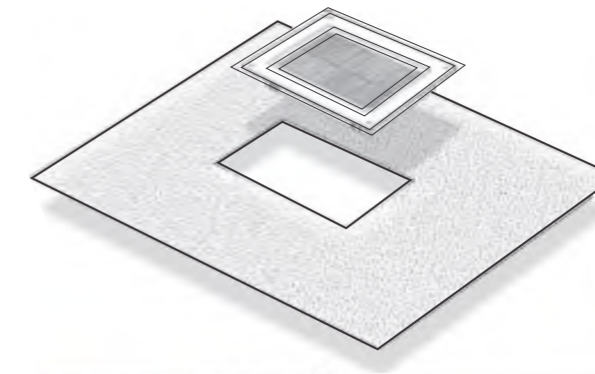
Part No.	Dimension	Provision (Max)	Finish
AVB-340X240-S	340x240x100	12 power or 24 port jacks	Stainless Steel
AVB-250x220-S	250X220X100	8 Power or 16 port jacks	Stainless Steel
AVB-250X125-S	250X125X65	4 power or 8 port jacks	Stainless Steel
AVB-220X120-G	220X120X65	2 power and 3 port jack	Zinc coated
AVB-130X130-S	130x130x85	2 power or 2 port jack	Stainless Steel

Grommet

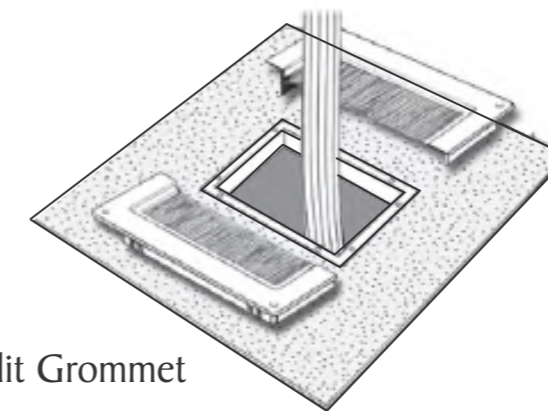


Square Brush Grommet Circular Brush Grommet Round Outline Box

If the cable opening for tile cut outs leave open, it can cause airflow bypass through these open areas. Grommets use to prevent this airflow bypass and thereby reduce hot spots by increasing the efficiency of entire cooling system. For an existing IT rooms, split grommets can be used as it helps to fix without disturbing existing cabling where as for new set up where there are no cables, fixed type grommets can be suggested.



Fixed Grommet



Split Grommet

Part No.	Dimension	Type	Finish
AVR-235X172-F		235X172	Fixed
AVR-235X172-S		235X172	Split
AVR-254X184-S		254X184	Split
AVR-254X330-S		254X330	Split
AVR-102X152-S		102X152	Split

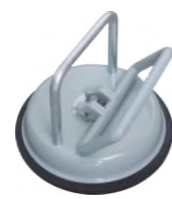
RAISED FLOOR

RAISED FLOOR

Panel Lifter



Panel Lifter 2 Jaws



Panel Lifter 1Jaw

Panel lifters uses for easy removal of raised floor panels. For removal of panels, crate a vacuum seal by pushing the suction cup of the lifter to the panel then lift and remove and release by pulling the trigger. Proper care required at the time of removal of tiles as the edge or bottom of the lifting tile do not hit the adjacent tile which can damage the top finish of the adjacent tiles.

Part No.	Description
AVR-PL-1C	Panel lifter with one cup
AVR-PL-2C	Panel lifter with two cups

Reference

Category 3 Unshielded Twisted Pair (UTP) cable - Indoor

Ordering Information : PVC

Part No.	Description	Packaging	Color
AVE-26100-2PI	UTP CAT3 2 PAIR PVC	1000 MTR	GREY
AVE-26100-4PI	UTP CAT3 4 PAIR PVC	1000 MTR	GREY
AVE-26100-6PI	UTP CAT3 6 PAIR PVC	1000 MTR	GREY
AVE-26100-10PI	UTP CAT3 10 PAIR PVC	1000 MTR	GREY
AVE-26100-25PI	UTP CAT3 25 PAIR PVC	1000 MTR	GREY
AVE-26100-50PI	UTP CAT3 50 PAIR PVC	1000 MTR	GREY
AVE-26100-100PI	UTP CAT3 100 PAIR PVC	1000 MTR	GREY

Ordering Information : LSZH

Part No.	Description	Packaging	Color
AVE-26100-2PILS	UTP CAT3 2 PAIR LSZH cable	1000 MTR	GREY
AVE-26100-4PILS	UTP CAT3 4 PAIR LSZH cable	1000 MTR	GREY
AVE-26100-6PILS	UTP CAT3 6 PAIR LSZH cable	1000 MTR	GREY
AVE-26100-10PILS	UTP CAT3 10 PAIR LSZH cable	1000 MTR	GREY
AVE-26100-25PILS	UTP CAT3 25 PAIR LSZH cable	1000 MTR	GREY
AVE-26100-50PILS	UTP CAT3 50 PAIR LSZH cable	1000 MTR	GREY
AVE-26100-100PILS	UTP CAT3 100 PAIR LSZH cable	1000 MTR	GREY

Category 3 Unshielded Twisted Pair (UTP) cable - Outdoor

Ordering Information

Part No.	Description	Packaging	Color
AVE-26100-2PO	UTP CAT3 2 PAIR PVC OUT DOOR	1000 MTR	BLACK
AVE-26100-4PO	UTP CAT3 4 PAIR PVC OUT DOOR	1000 MTR	BLACK
AVE-26100-6PO	UTP CAT3 6 PAIR PVC OUT DOOR	1000 MTR	BLACK
AVE-26100-10PO	UTP CAT3 10 PAIR PVC OUT DOOR	1000 MTR	BLACK
AVE-26100-25PO	UTP CAT3 25 PAIR PVC OUT DOOR	1000 MTR	BLACK
AVE-26100-50PO	UTP CAT3 50 PAIR PVC OUT DOOR	1000 MTR	BLACK
AVE-26100-100PO	UTP CAT3 100 PAIR PVC OUT DOOR	1000 MTR	BLACK

RAISED FLOOR

RAISED FLOOR