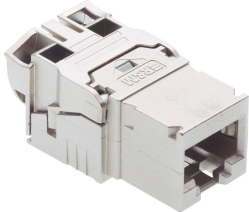


Product information

Connection Module Cat. 6A EL, 1xRJ45/s, Special, 10x

R813508
977803015
10 pcs



The module for the classic office cabling. Easy to install with solid Cat. 6A performance.

- RJ45 Cat. 6A EL connection module, shielded
- Dust cover

090.7180

Description

The R&M *freenet* Cat. 6A EL connection modules, part of the Freenet cabling system, are ideal for voice, fast data transmissions and high bandwidth applications. This highperformance Cat. 6A module is perfect for use in 10 Gigabit Ethernet (10GBASE-T) and future high-speed applications up to 500 MHz.

Technical Data

DESCRIPTION [UNIT]	VALUE/VALUE RANGE
Standard	UL Recognized IEC 60603-7-51: Electrical Characteristics of the Telecommunication Outlets ISO/IEC 11801-1 Ed 1.0 2017-11 EN 50173-1: May 2011
Protection class IP	IP 20
PoE	Yes
Connector class	connection module
Shielding connector (A)	shielded
Connector type (A)	RJ45
Category connector (A)	Cat. 6A ISO
Holder for connector / module	Special (without mounting plate)
Wiring diagram	TIA-568A / TIA-568B
Poles	8

Mechanical Data

DESCRIPTION [UNIT]	VALUE/VALUE RANGE
Color	metallic

RJ45 connection module of Cat.6A ISO, for the setting up of transmission channels of Class 6A with up to 4 connectors acc. to ISO/IEC 11801 ed. 2.2, June 2011, EN 50173-1 May 2011 (DIN EN 50173-1), complies with Cat.6A requirements of the standards ISO/IEC 11801 ed. 2.2, June 2011, EN 50173-1 May 2011, as well the U.S. standard Cat.6A according to TIA 568-C.2, re-embedded tested in acc. with IEC 60603-7-51 and 60512-27-100, interoperable and backwards compatible with Category 6 and Category 5e. Suitable for 10GBASE-T applications in acc. with IEEE 802.3™ Section Four up to 500 MHz and 100 m.




Tested in line with R&M's manufacturing control, performing 100% inspection. Each module has an own serial number and is traceable.

Compatible with RJ standard plugs (RJ11, RJ12, RJ45), connection of installation cables AWG 26 - 22 (0.4 mm - 0.65 mm) and flexible cables AWG 26/7 - AWG 22/7 without special tools. Parallel pair termination without crossover in acc. with TIA 568-A/B, gold-plated bronze contacts for >1000 mating cycles, IDC contacts with ≥ 4 insertion cycles acc. to IEC 60352-3, contact resistance <5 mOhm, dielectric strength >1000 Veff. Supports PoE (IEEE 802.3af), PoEP (IEEE 802.3at), 4Ppoe (IEEE 802.3bt) and is compatible to IEC 60512-99-001/002. With integral cable strain relief, including dust cover, nickel plated zinc die-cast housing, ground contacting through 1 contact finger for flat connectors AMP 2.8 x 0.5 mm.

Material: halogen-free and heavy-metal free in acc. with EU directives RoHS 2.

Connection module Cat.6A EL, die-cast, shielded and dust cover.

	Description	PU	Product No.
	Cable Insert Cat. 6A EL, 4-5 mm Cable	100 pcs	R813797
	Copper foil for Module Cat. 6A EL, 10x	1 pcs	R824374
	Copper foil for Module Cat. 6A EL, 100x	1 pcs	R814599
	Adapter 90° Module RJ45 C6A-EL/s-10	10 pcs	R833665
	Adapter C6, 6A /s Keystone 3rd Gen.	10 pcs	R837034
	Adapter No.1 EL /u 10x	10 pcs	R832197

	Description	PU	Product No.
	Adapter freenet EL/u 10x	10 pcs	R832198
	FM Outlet 2 x 1 Port Cat. 6A EL, with Faceplate Ø58, pure white, STANDARDdue	1 pcs	R830532
	Installation Kit HWSmodular, white, for Cat. 6A EL	1 pcs	R843209